



# Fast and Easy School Screening Tests



KALEIDOS



## Early Detection is **NECESSARY**



Investing in children's vision screening is crucial for the well-being of the upcoming generation. Vision problems can negatively impact a child's academic performance, social interaction, and overall quality of life. Early detection and treatment of these issues can significantly improve outcomes and prevent long-term vision problems. It is essential to prioritize vision screening as a part of routine healthcare for children to ensure they receive accurate and comprehensive eye care. This investment in children's vision health will not only benefit them but also contribute to a healthier and more productive society in the future. Many of pre-school children have difficulty to find out their vision issues at early age: kids may exhibit few symptoms and they are unlikely to complain about the inability to see.

Kaleidos has screened 3 million children and counting. Binocular objective refraction only takes 3 seconds using Kaleidos. The measurement is fully automated and the reliability of each examination is automatically checked by the device. Kaleidos, thanks to a small and practical suitcase, can be transported everywhere. The tube serves as a portable dark room for the device, allowing examinations to be performed in every environment and light conditions.

Kaleidos communicates with a tablet through the intuitive Kaleidos App, an user-friendly application that can be used to store and share data with collaborators, colleagues, and patients. By using Kaleidos App, Screening Mode is also available. This feature expands the software's modes, allowing mass screening tests to be performed easily, efficiently, and rapidly.



# The Screening System



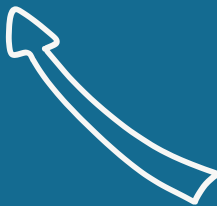
Prepare patients list and import it into Kaleidos App



Start Kaleidos App on the tablet



Export data and share them with patients or colleagues



Begin the screening: it takes only 3 seconds per student!



Kaleidos allows simultaneous evaluation of refraction and binocular cooperation of subjects in natural (without cycloplegia) and not dissociating conditions, as opposite to autorefractometers, which only work monocularly. Kaleidos is an indispensable device for amblyogenic risk factors screening (refractive errors, dioptric means opacity, strabismus), especially in pre-scholar children.

~ Dr. Mario Angi (Ophthalmologist)

# Technical Information

• <b>Model Name:</b> 2WIN-S	• <b>Commercial Name:</b> Kaleidos
• <b>Operating Mode:</b> Automatic, binocular / monocular	• <b>User Interface:</b> Android application for tablets, providing remote control, live streaming, data management
• <b>Sphere Range:</b> $\pm 15$ D; in the range $\pm 7$ D, step 0.25 D from $\pm 7$ D to $\pm 15$ D, step 0.50 D	• <b>Data Interface:</b> Wi-Fi, internal microSD card & Bluetooth
• <b>Cylinder Range:</b> $\pm 5$ D, step 0.25 D	• <b>Tablet Printer Interface:</b> Bluetooth, Wi-Fi and email printing
• <b>Cylinder Axis:</b> $1^\circ - 180^\circ$ , step $1^\circ$	• <b>Tube Size:</b> 119 x 23 x 15 cm
• <b>Pupil Size:</b> Automatic detection, 4-11 mm, step 0.1 mm	• <b>Metal Stand Size:</b> 45 x 32 x 21,5 cm
• <b>Pupil Distance:</b> Automatic detection, 30-120 mm, step 0.1 mm	• <b>Max Height Operation System:</b> 130 cm
• <b>Fixation Target:</b> Built-in	• <b>Net Weight:</b> 5,5 kg
• <b>Acoustic Target:</b> Built-in	• <b>Power:</b> Rechargeable battery pack, 50 Wh
• <b>Hygienical Disposable Masks:</b> Included	• <b>Battery Charge:</b> AC/DC medical power supply 18V, 40 W



Adaptica S.r.l.  
Via San Marco, 9/H  
35129 Padova, Italy

Ph. +39 049 773 968  
Fax +39 049 097 0901  
[www.adaptica.com](http://www.adaptica.com)  
[contact@adaptica.com](mailto:contact@adaptica.com)

