

REGISTER YOUR 2WIN

It's highly recommended to register your 2WIN at <http://www.2winforvision.com/register>

or send an e-mail to register2win@adaptica.com with: **Name, Surname** (or the name of your Organization), your **Nationality** and **2WIN serial number**.

Product Registration allows us to send:

- software updates
- additional software packages
- service information
- helpful hints related to your product.



Adaptica Srl - Padova (Italy)

ph. +39 049 773968 - fax +39 049 773968

info@2winforvision.com

Document Revision 1.2- 2014

THE ELECTRONIC VERSION OF THE OPERATOR MANUAL IS INSIDE THE MICROSD CARD OF THE 2WIN

It is mandatory to read carefully the Operator Manual (pdf file) before using the 2WIN device.

Misuse can cause damages to persons and things.

If you are not able to open any pdf file of your PC you can go to <http://get.adobe.com/it/reader/> and download a free Pdf Reader

1

HOW TO READ THE OPERATOR MANUAL FOR THE FIRST TIME

1) INSERT BATTERY

- To insert the battery: slide the battery lock, hold it and gently open the battery door located in the lower side of the device. Insert the battery.

Pay attention in inserting the battery with its connector facing down towards the instrument's inside so that the connector of the battery matches the connector inside the device. Close the battery door and lock it.

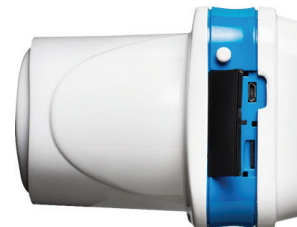


NOTE: THE BATTERY MUST BE CHARGED AT LEAST ONCE EVERY 30 DAYS

2

2) OPERATOR MANUAL

- Open the USB: connect the 2WIN to a PC by means of the USB cable supplied. The 2WIN is seen as an external memory storage, it is now possible to copy the Operator Manual (pdf file) from the 2WIN microSD card to the PC.



3