

# 2WIN

## App-Connection Wi-Fi MANUAL



**UNSUPPORTED LEGACY FEATURE –  
ONLY FOR BACKWARDS COMPATIBILITY**

## Revision notes

Software configuration version	2WIN/2WIN-S 5.6.0
Publication date	2022/02/17
Hardware configuration	Version 37.1
Rev Num.	1.0_EN

## General notes

**Family:** 2WIN VISION ANALYZER

**Family intended use:** Portable instruments for the measurement of binocular and monocular refraction based on infrared photorefracton

**Models:** 2WIN, 2WIN-S, 2WIN-S PLUS

## Remote control: 2WIN App-Connection Wi-Fi



For a detailed description of the functionalities of 2WIN and 2WIN-S, please refer to the respective manual.

The tablet shall satisfy the following requirements:

- Android version: 8.0, 8.1, 9, 10
- Display size: 10 inches or more
- Processor type: ARMv7

Recommended tablet models are:

- Huawei MediaPad T5
- Lenovo TB-X605L
- Lenovo TB-X306X

You can download the 2WIN App-Connection Wi-Fi on your device from Adaptica's [website](#) in the section **Products > 2WIN-S > Technical Information > Downloads > KALEIDOS App Wi-Fi**.



**Tablet's Android system updates are forbidden. They could compromise the app's functioning.**

### **2WIN App-Connection Wi-Fi: installation and configuration**

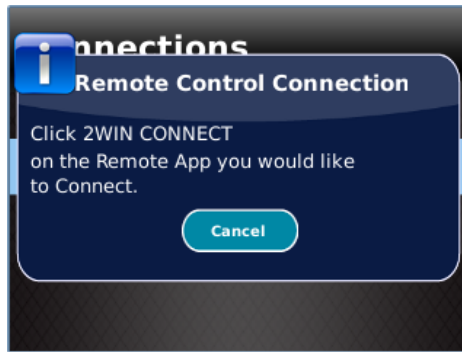


For further information on buttons' functionalities, please refer to *2WIN Operator Manual*.

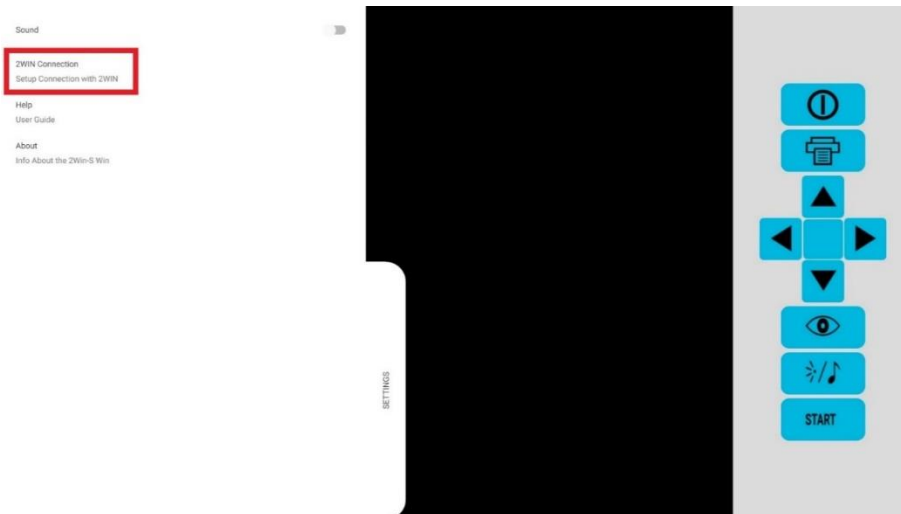
To use the 2WIN App-Connection Wi-Fi, the device and the application must be paired for the first time as follows:

1. Install the 2WIN App-Connection Wi-Fi on your device and run it.
2. Switch the 2WIN on and connect it to the same Wi-Fi network of the tablet.
3. Enter 2WIN's **Menu > Settings > Wireless > Connections** and enable **"App Connection"**.

4. The following window is shown on 2WIN's display:



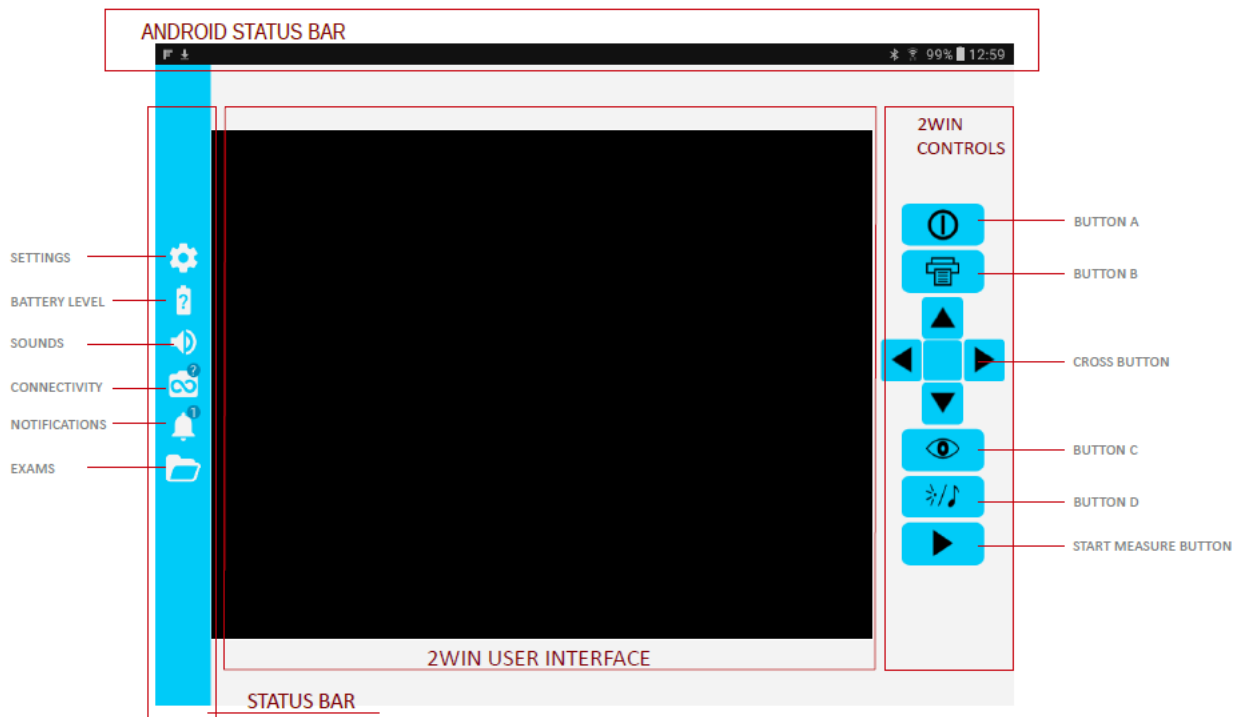
5. From the 2WIN App-Connection Wi-Fi open the **Settings** panel and select **2WIN Connection**



When paired for the first time, the application will show the serial number of the 2WIN.

If you want to remove the pairing, to connect another 2WIN to the application, simply tap again on the 2WIN App-Connection Wi-Fi **Settings > 2WIN Connection** and follow the instructions on the screen.

## How to use the 2WIN App-Connection Wi-Fi



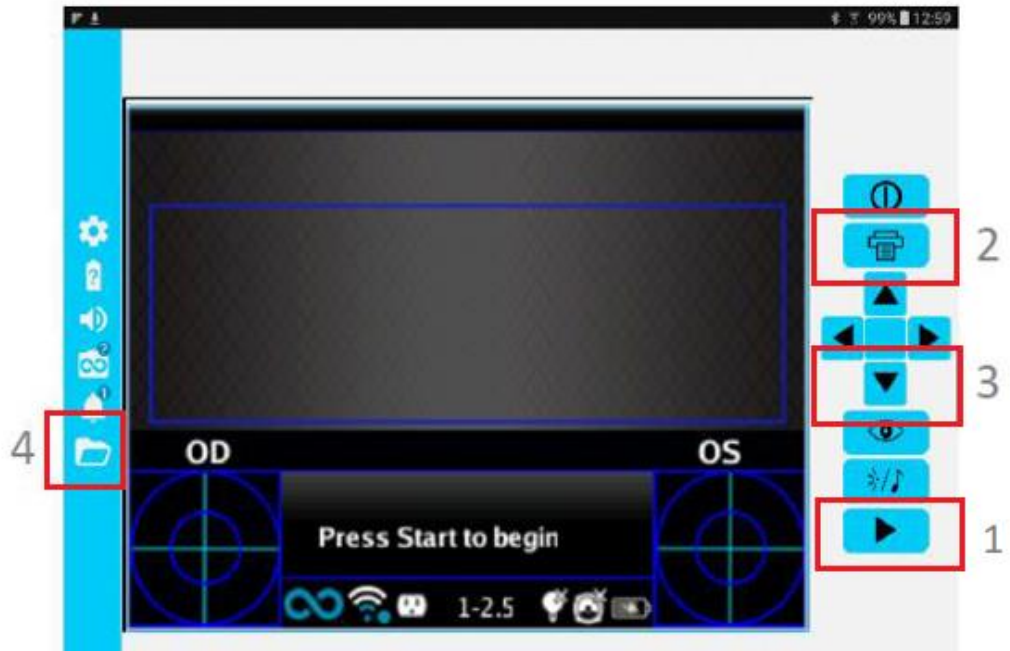
The right-side buttons of the 2WIN App-Connection Wi-Fi are the replica of the 2WIN buttons, so the functions of 2WIN's physical buttons are controlled by the app.

On the left side of the 2WIN App-Connection Wi-Fi there are all the status icons and settings of the app. Note that the icon representing the 2WIN must contain a GREEN dot. If it's not present, even if the 2WIN and tablet are paired correctly, tap on the 2WIN icon to refresh the connection.

## How to transfer 2WIN's measurement to the 2WIN App-Connection Wi-Fi

Follow these instructions:

1. Start the measurement using BUTTON S1 or S2.
2. Long press BUTTON B to save your data. A PDF report is created.
3. Short press the JOYSTICK downwards to import the report in the tablet.
4. The report is saved in the EXAM folder. Open the folder tapping on its icon.



## Information for assistance

For any service requirement, please contact your distributor. Nevertheless, you can contact directly Adaptica at: [support@adaptica.com](mailto:support@adaptica.com).